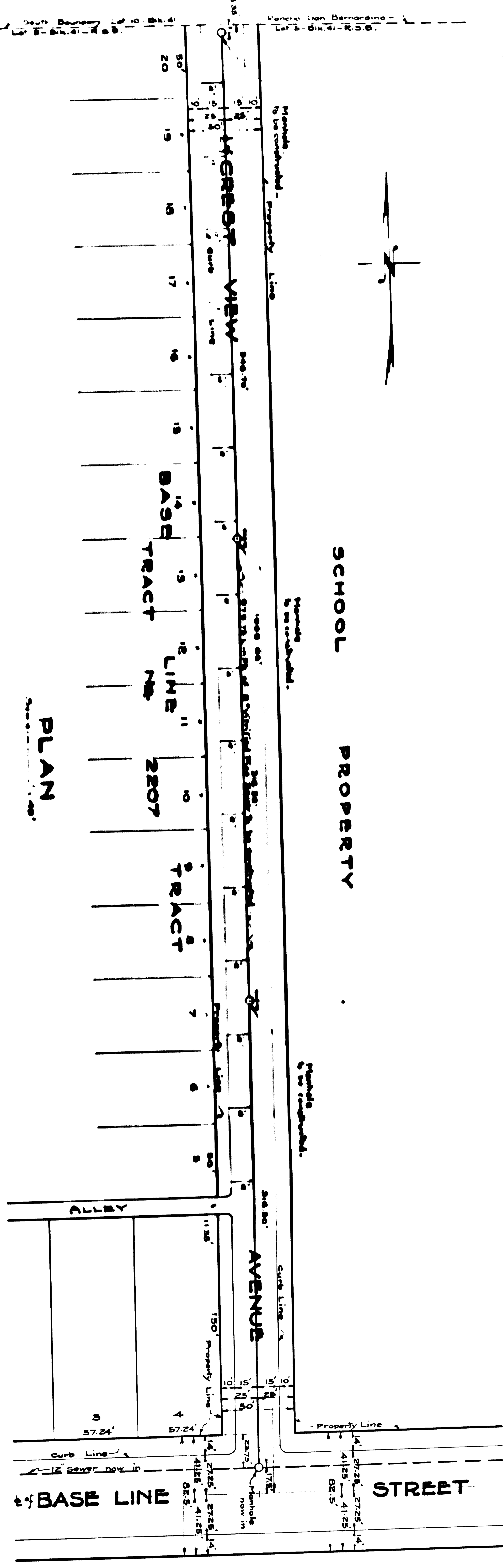




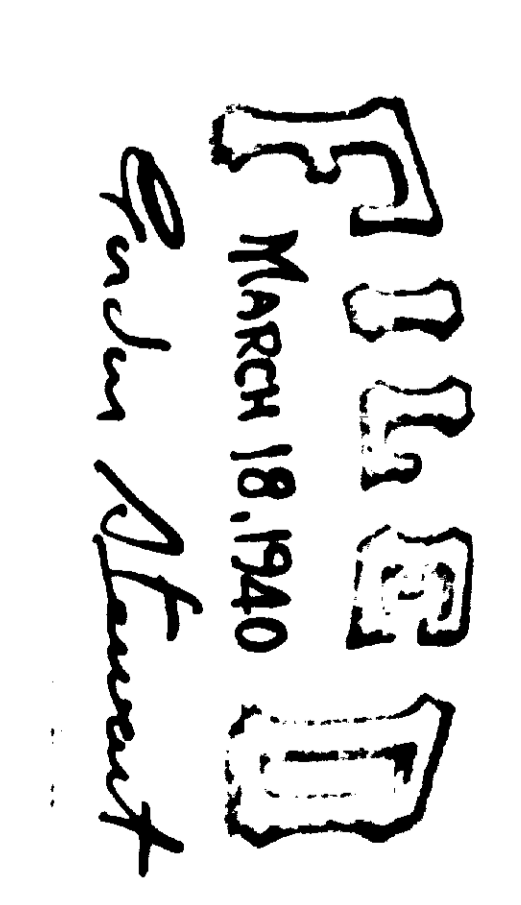
SCHOOL PROPERTY



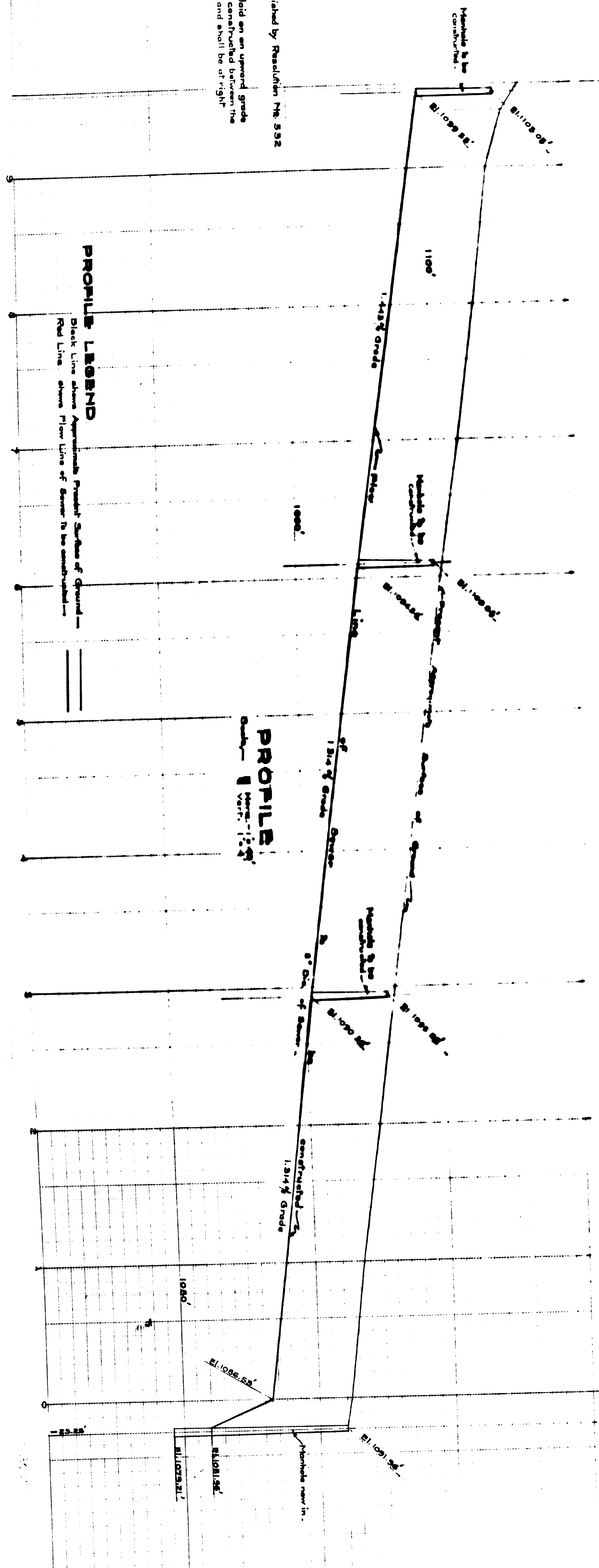
PLAN

SHEET NO. 2 1377
PLAN NO. 1377
FOR
SEWER
IN CREST VIEW AVENUE
BETWEEN BASE LINE STREET AND A PORTION
961.35' NORTH OF THE NORTH PROPERTY LINE OF
SAN BERNARDINO
CALIFORNIA
GORDON

MARCH-1940



PLAN ADOPTED MARCH 23, 1940.



PROFILE

PROFILE LEGEND

Black Line shows Approximate Profile Surface of Ground
Red Line shows Floor Line of Sewer to be constructed

DETAIL OF SEWER
No. 12 in. of 8" Vitrified Pipe Sewer to be constructed
No. 12 in. of 4" Vitrified Pipe Sewer to be constructed
No. 12 in. of 4" Vitrified Pipe Sewer to be installed
No. of Manholes to be constructed

LEGEND
Manhole new in, shown thus
Manhole to be constructed, shown thus
6" Vitrified Pipe of Connecting Sewer, to be installed, shown thus
Sewer pipe in shown thus,
Sewer pipe in shown thus,
or in means inch
No. means number
El. means elevation
± means center line

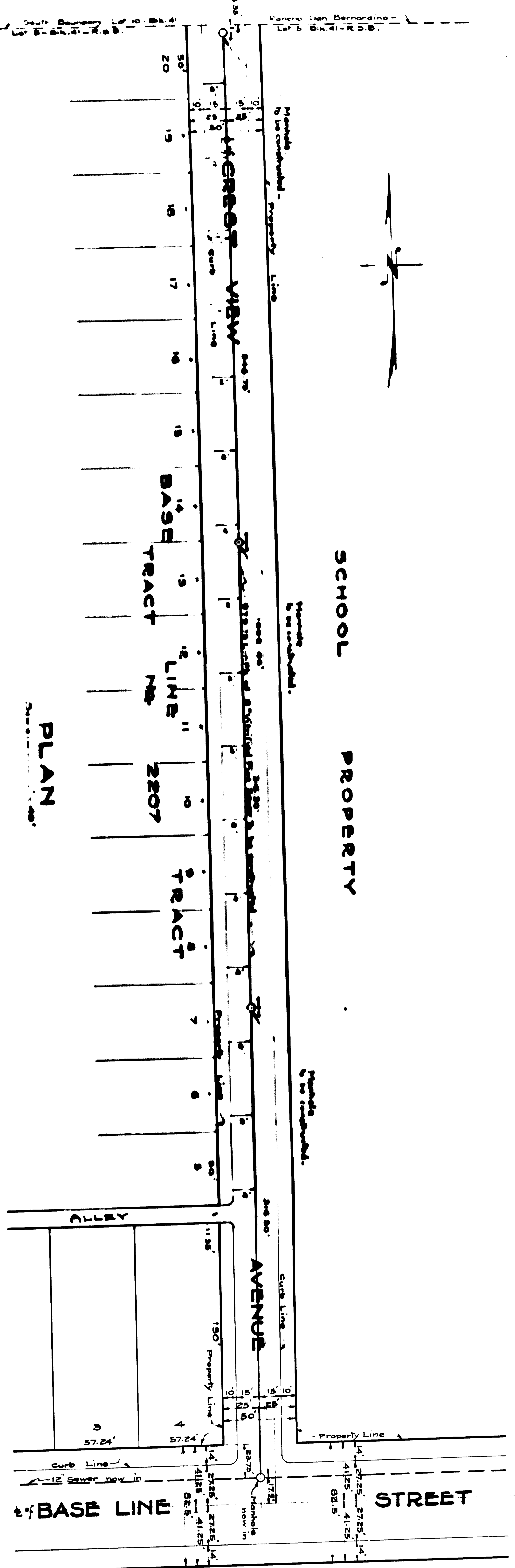
DATUM
All Elevations shown in Red ink are in Feet and are above
which is 1045.25 ft. below the City Bench Mark as established
Ordinance No. 283, City of San Bernardino.

ADDS
Grade of Crest View Av. established by Resolution No. 532

NOTES
All Connecting Sewers shall be laid on an upward grade
of 1/8" per foot and shall be constructed between the
main sewer and the curb line, and shall be of 12" or
larger to the main sewer.



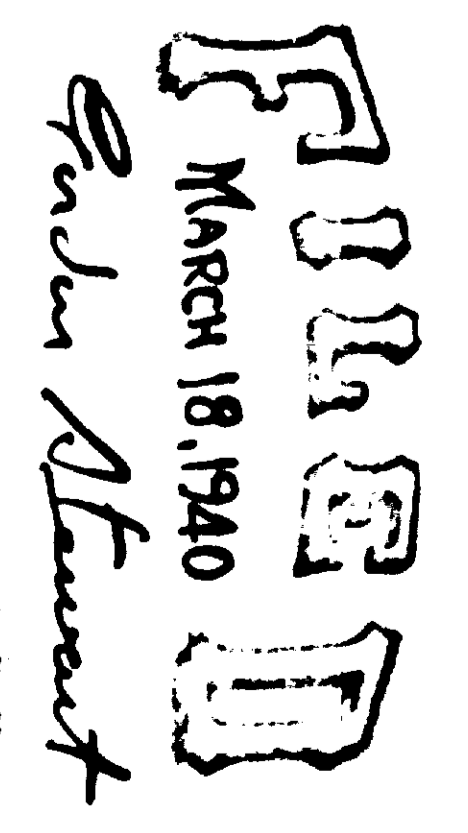
SCHOOL PROPERTY



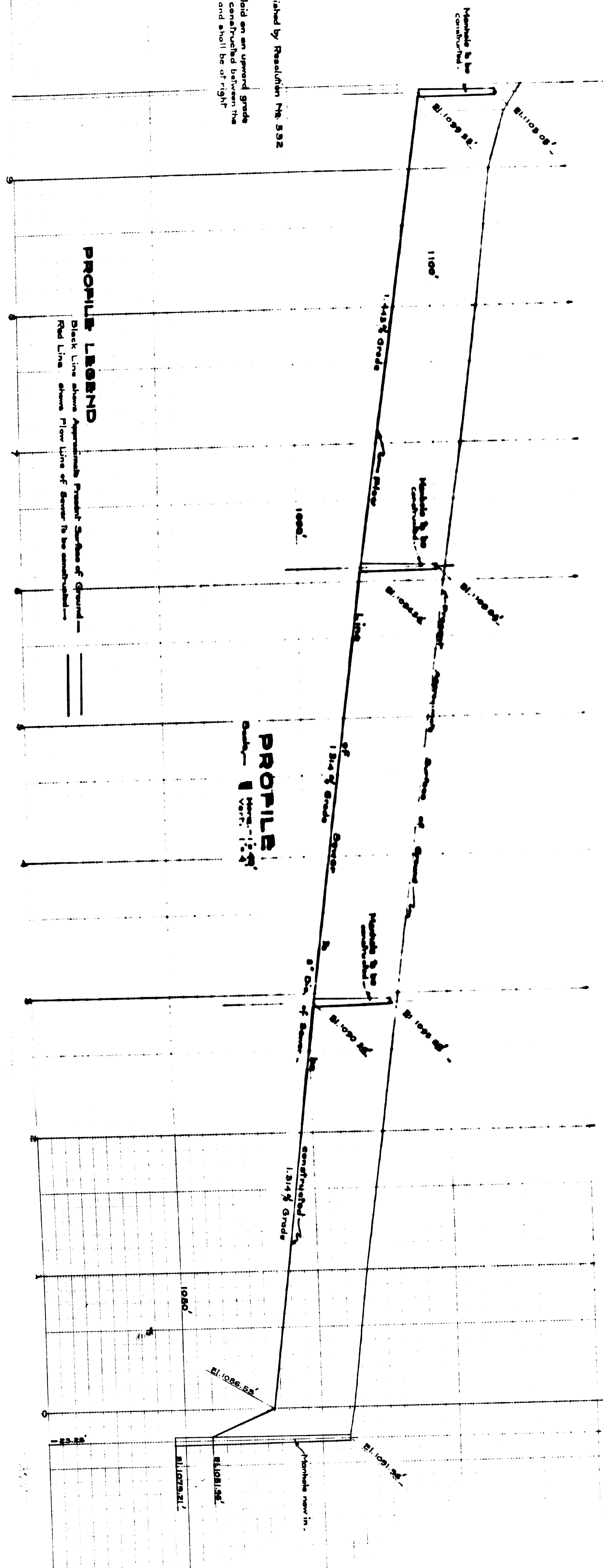
PLAN

SHEET No. 2
PLAN No. 1377
FOR
SEWER
IN CREST VIEW AVENUE
BETWEEN BASE LINE STREET AND A POINT
961.35' NORTH OF THE NORTH PROPERTY LINE OF
SAN BERNARDINO
CALIFORNIA

MARCH-1940 GORDON



PLAN ADOPTED MARCH 23, 1940



PROFILE

PROFILE LEGEND

Black Line shows Approximate Profile Surface of Ground
Red Line shows Floor Line of Sewer to be constructed

TITLE TO STREET

Crest View Av. - Dedicated by Map of Base Line Tract (Tract
Created Nov. 15-1906 in Map Book 21 - Page
Base Line St. - Dedicated by Map of San Bernardino Rancho
Dedicated for Road - Mich. 10-1897
Resolved - Nov. 18-1904 in Map Bk.

DETAIL OF SEWER

8" Lin. Ft. of 8" Vitrified Pipe Sewer to be constructed
4" Lin. Ft. of 4" Vitrified Pipe Sewer to be constructed
18" Lin. Ft. of 18" Vitrified & Cemented Sewer to be installed
18" of Manhole to be constructed

LEGEND

Manhole new in, shown thus
Manhole to be constructed shown thus
6" Vitrified Pipe of Connecting Sewer, to be installed shown thus
8" Vitrified Pipe of Connecting Sewer, to be installed shown thus
18" Vitrified & Cemented Sewer, to be installed shown thus
or in means inch
or in means feet
No. means number
El. means elevation
± means center line

DATUM

All Elevations shown in Red ink are in Feet and are above
which is 1045.25 ft. below the City Bench Mark as established
Ordinance No. 383, City of San Bernardino

ADDS
Grade of Crest View Av. established by Resolution No. 532

NOTES
All Connecting Sewers shall be laid on an upward grade
of one foot per one hundred feet and shall be constructed between the
main sewer and the curb line, and shall be of 18" or
larger to the main sewer.